

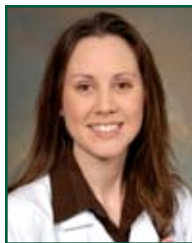
# UC Department of Emergency Medicine Physicians



## **W. Brian Gibler, MD, FAHA**

**Richard C. Levy Professor of Emergency Medicine and  
Chairman, UC Department of Emergency Medicine  
Director, University Hospital Center for Emergency Care**

*Residency* – Emergency Medicine, University of  
Cincinnati, Cincinnati, Ohio  
*MD* – Vanderbilt University, Nashville, Tennessee  
*BS* – Brown University, Providence, Rhode Island



## **Rhonda S. Cadena, MD, MS**

**Assistant Professor of Emergency Medicine  
Fellow, Neurovascular Emergencies  
Member, Greater Cincinnati-Northern KY Stroke Team**

*Residency* – Emergency Medicine, University of  
Cincinnati, Cincinnati, Ohio  
*MD* – Southern Illinois University, Springfield, Illinois  
*MS* – Southern Illinois University, Carbondale, Illinois  
*BS* – Southern Illinois University, Carbondale, Illinois



## **Opeolu M. Adeoye, MD**

**Assistant Professor of Emergency Medicine  
Member, Greater Cincinnati-Northern KY Stroke Team**

*Fellowship* – Neurovascular Emergencies, University of  
Cincinnati  
*Residency* – Emergency Medicine, University of  
Cincinnati, Cincinnati, Ohio  
*MD* – University of Pittsburgh, Pittsburgh, Pennsylvania  
*BS* – University of Maryland, Baltimore, Maryland



## **John W. Campbell III, MD**

**Assistant Professor of Emergency Medicine  
Director 4<sup>th</sup> Year Medical Student Education, UC  
Department of Emergency Medicine**

*Residency* – Emergency Medicine, University of  
Cincinnati, Cincinnati, Ohio  
*MD* – Boston University, Boston, Massachusetts  
*BS* – Xavier University, Cincinnati, Ohio



## **M. Stephen Baxter, MD**

**Assistant Professor of Emergency Medicine**

*Residency* – Emergency Medicine, University of  
Cincinnati, Cincinnati, Ohio  
*MD* – University of Cincinnati, Cincinnati, Ohio  
*BS* – Ohio State University, Columbus, Ohio



## **Steven C. Carleton, MD, PhD**

**Associate Professor of Emergency Medicine and  
Director, EM Ultrasound Education  
Director, Third Year Medical Student Education,  
UC Department of Emergency Medicine**

*Residency* – Emergency Medicine, University of  
Cincinnati, Cincinnati, Ohio  
*MD* – University of Cincinnati, Cincinnati, Ohio  
*PhD* – Anatomy, Uniformed Services University of the  
Health Sciences, Bethesda, Maryland  
*BA* – Kenyon College, Gambier, Ohio



## **Andra L. Blomkalns, MD**

**Associate Professor of Emergency Medicine and  
Vice Chairman – Academic Affairs**

*Residency* – Emergency Medicine, University of  
Cincinnati, Cincinnati, Ohio  
*MD* – Louisiana State University, Shreveport, Louisiana  
*BS* – Rice University, Houston, Texas



## **Sean P. Collins, MD, MSc**

**Assistant Professor of Emergency Medicine**

*Residency* – Emergency Medicine, University of  
Cincinnati, Cincinnati, Ohio  
*MD* – University of Wisconsin, Madison, Wisconsin  
*MSc* – Harvard School of Public Health, Boston,  
Massachusetts  
*BS* – Boston University, Boston, Massachusetts



## **Jordan B. Bonomo, MD**

**Instructor of Clinical Emergency Medicine  
Fellow, Neurovascular Emergencies  
Member, Greater Cincinnati-Northern KY Stroke Team**

*Residency* – Emergency Medicine, University of  
Cincinnati, Cincinnati, Ohio  
*MD* – Brown University, Providence, Rhode Island  
*BA* – Brown University, Providence, Rhode Island



## **John M. Deledda, MD**

**Assistant Professor of Emergency Medicine  
Medical Director, University Hospital Center for  
Emergency Care  
Chief of Staff - Elect, University Hospital**

*Residency* – Emergency Medicine, University of  
Cincinnati, Cincinnati, Ohio  
*MD* – University of Michigan, Ann Arbor, Michigan  
*BS* – University of Michigan, Ann Arbor, Michigan



### **Gregory J. Fermann, MD**

**Associate Professor of Emergency Medicine and Vice Chairman - Strategic Planning**

*Residency* – Emergency Medicine, Maricopa Medical Center, Phoenix, Arizona  
*MD* – University of Cincinnati, Cincinnati, Ohio  
*BA* – St. Louis University, St. Louis, Missouri



### **William R. Hinckley, MD**

**Assistant Professor of Emergency Medicine  
Medical Director, University Air Care**

*Residency* – Emergency Medicine, University of Cincinnati, Cincinnati, Ohio  
*MD* – Indiana University School of Medicine, Indianapolis, Indiana  
*BA* – Indiana University, Bloomington, Indiana



### **J. Gregory Frappier, DO**

**Assistant Professor of Emergency Medicine**

*Residency* – Emergency Medicine, Brentwood Hospital, Cleveland, Ohio  
*DO* – College of Osteopathic Medicine of the Pacific, Pomona, California  
*BS* – Alma College, Flint, Michigan



### **Carolyn K. Holland, MD, MEd**

**Assistant Professor of Emergency Medicine  
Fellow, Cincinnati Children's Hospital Medical Center**

*Residency* – Emergency Medicine, University of Cincinnati, Cincinnati, Ohio  
*MD* – Eastern Virginia Medical School, Norfolk, Virginia  
*MEd* – University of Florida, Gainesville, Florida  
*BS* – University of Florida, Gainesville, Florida



### **Erin M. Grise, MD**

**Instructor of Clinical Emergency Medicine  
Fellow, Neurovascular Emergencies  
Member, Greater Cincinnati-Northern KY Stroke Team**

*Residency* – Emergency Medicine, University of Cincinnati, Cincinnati, Ohio  
*MD* – Feinberg SOM-Northwestern University, Chicago, Illinois  
*BS* – Miami University, Oxford, Ohio



### **Kevin J. Joseph, MD**

**Assistant Professor of Emergency Medicine  
Emergency Medicine Trauma Liaison, University Hospital  
Director, EM Mid-Level Provider Program  
Medical Director, West Chester Emergency Department**

*Residency* – Emergency Medicine, University of Cincinnati, Cincinnati, Ohio  
*MD* – Vanderbilt University School of Medicine, Nashville, Tennessee  
*BS* – Johns Hopkins University, Baltimore, Maryland



### **Amy R. Gutman, MD**

**Assistant Professor of Emergency Medicine  
Associate Director, Mid-Level Provider Program**

*Fellowship* – Emergency Medical Services, University of Cincinnati, Cincinnati, Ohio  
*Residency* – Emergency Medicine, Louisiana State University, Shreveport, Louisiana  
*Internship* – General Surgery, Bassett Healthcare, Cooperstown, New York  
*MD* – Saba University School of Medicine, Saba, Netherlands-Antille  
*BS* – King's College, Wilkes-Barre, Pennsylvania  
*BA* – Albion College, Albion, Michigan



### **William A. Knight IV, MD**

**Assistant Professor of Emergency Medicine  
Member, Greater Cincinnati-Northern KY Stroke Team**

*Fellowship* – Neurovascular Emergencies, University of Cincinnati, Cincinnati, Ohio  
*Residency* – Emergency Medicine, University of Cincinnati, Cincinnati, Ohio  
*MD* – University of Cincinnati, Cincinnati, Ohio  
*BS* – University of Dayton, Dayton, Ohio



### **Laura E. Heitsch, MD**

**Assistant Professor of Emergency Medicine  
Fellow, Neurovascular Emergencies  
Member, Greater Cincinnati-Northern KY Stroke Team**

*Residency* – Emergency Medicine, University of Cincinnati, Cincinnati, Ohio  
*MD* – University of Illinois, Chicago, Illinois  
*BS* – University of Illinois, Chicago, Illinois



### **Douglas C. Krejsa, MD**

**Assistant Professor of Emergency Medicine  
Associate Medical Director, West Chester Emergency Department**

*Residency* – Emergency Medicine, Metro Health Medical Center, Cleveland, Ohio  
*MD* – Case Western Reserve, Cleveland, Ohio  
*BA* – University of Michigan, Ann Arbor, Michigan



### **Sabrina D. Leach, MD**

**Assistant Professor of Emergency Medicine**

*Residency* – Emergency Medicine, University of Cincinnati, Cincinnati, Ohio  
*MD* – University of Cincinnati, Cincinnati, Ohio  
*BS* – Ohio University, Athens, Ohio



**Elizabeth E. Leenellett, MD**

**Assistant Professor of Emergency Medicine  
Associate Medical Director and Director, Resident  
Education, West Chester Emergency Department**

*Residency* – Emergency Medicine, University of Cincinnati, Cincinnati, Ohio  
*MD* – University of Michigan, Ann Arbor, Michigan  
*BS* – University of Michigan, Ann Arbor, Michigan



**Joseph J. Moellman, MD**

**Associate Professor of Emergency Medicine  
Associate Medical Director, Jewish Hospital  
Emergency Department**

*Residency* – Emergency Medicine, University of Cincinnati, Cincinnati, Ohio  
*MD* – University of Cincinnati, Cincinnati, Ohio  
*BS* – Xavier University, Cincinnati, Ohio



**Richard C. Levy, MD, MPH**

**Professor of Emergency Medicine**

*Residency* – Emergency Medicine, University of Cincinnati, Cincinnati, Ohio  
*MD* – University of Louisville, Louisville, Kentucky  
*MPH* – Harvard University School of Public Health, Boston, Massachusetts  
*BA* – University of Kentucky, Lexington, Kentucky



**William J. Naber, MD**

**Assistant Professor of Emergency Medicine**

*Residency* – Emergency Medicine, Geisinger Medical Center, Danville, Pennsylvania  
*MD* – University of Cincinnati, Cincinnati, Ohio  
*BS* – University of Dayton, Dayton, Ohio



**Donald A. Locasto, MD**

**Assistant Professor of Emergency Medicine  
Director, Special Operations Institute**

*Residency* – Combined Emergency Medicine/Internal Medicine, Allegheny General Hospital, Pittsburgh, Pennsylvania  
*MD* – University of Medicine and Dentistry of New Jersey, Piscataway, New Jersey  
*BS* – Rutgers University, Newark, New Jersey



**Edward J. Otten, MD, FACMT**

**Professor of Emergency Medicine  
Director, Division of Toxicology**

*Residency* – Emergency Medicine, University of Cincinnati, Cincinnati, Ohio  
*MD* – University of Cincinnati, Cincinnati, Ohio  
*BA* – Kenyon College, Gambier, Ohio



**Michael S. Lyons, MD**

**Assistant Professor of Emergency Medicine  
Director, Early Intervention HIV Program**

*Residency* – Emergency Medicine, University of Cincinnati, Cincinnati, Ohio  
*MD* – Duke University, Durham, North Carolina  
*BA* – Northwestern University, Evanston, Illinois



**Arthur M. Pancioli, MD**

**Professor of Emergency Medicine and Executive Vice  
Chairman  
Member, Greater Cincinnati-Northern KY Stroke Team**

*Residency* – Emergency Medicine, University of Cincinnati, Cincinnati, Ohio  
*MD* – University of Michigan, Ann Arbor, Michigan  
*BS* – University of Michigan, Ann Arbor, Michigan



**Jason T. McMullan, MD**

**Assistant Professor of Emergency Medicine**

*Fellowship* – Emergency Medical Services, University of Cincinnati, Cincinnati, Ohio  
*Residency* – Emergency Medicine, University of Cincinnati, Cincinnati, Ohio  
*MD* – Medical University of South Carolina, Charleston, South Carolina  
*BA* – Davidson College, Davidson, North Carolina



**Marcus G. Romanello, MD**

**Assistant Professor of Emergency Medicine**

*Residency* – Emergency Medicine, University of Alabama, Birmingham, Alabama  
*MD* – University of Cincinnati, Cincinnati, Ohio  
*BA* – Miami University, Oxford, Ohio



**Christopher N. Miller, MD, MS**

**Assistant Professor of Emergency Medicine  
Associate Medical Director, University Hospital  
Center for Emergency Care**

*Residency* – Emergency Medicine, University of Cincinnati, Cincinnati, Ohio  
*Internship* – Naval Medical Center, Portsmouth, Virginia  
*MD* – University of Kentucky, Lexington, Kentucky  
*MS* – University of Kentucky, Lexington, Kentucky  
*BS* – University of Kentucky, Lexington, Kentucky



**Sarah E. Ronan-Bentle, MD, MS**

**Assistant Professor of Emergency Medicine and  
Associate Residency Director, UC Department of  
Emergency Medicine**

*Residency* – Emergency Medicine, University of Cincinnati, Cincinnati, Ohio  
*MD* – University of Cincinnati, Cincinnati, Ohio  
*MS* – St. Louis University, St. Louis, Missouri  
*BS* – St. Louis University, St. Louis, Missouri



**Richard J. Ryan, MD**

**Associate Professor of Emergency Medicine and Vice  
Chairman - Practice Management  
Medical Director, Jewish Hospital Emergency Department  
Past President, Jewish Hospital Medical Staff**

*Residency* – Emergency Medicine, University of  
Cincinnati, Cincinnati, Ohio  
*MD* – New York Medical College, Valhalla, New York  
*BS* – Boston College, Chestnut Hill, Massachusetts



**Lisa L. Willacker, MD**

**Assistant Professor of Emergency Medicine**

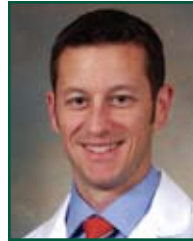
*Residency* – Emergency Medicine, University of  
Cincinnati, Cincinnati, Ohio  
*MD* – University of Cincinnati, Cincinnati, Ohio  
*BS* – Northern Kentucky University,  
Highland Heights, Kentucky



**George J. Shaw, III, MD, PhD**

**Assistant Professor of Emergency Medicine**

*Residency* – Emergency Medicine, University of  
Cincinnati, Cincinnati, Ohio  
*MD* – Georgetown University, Washington, DC  
*PhD* – Physics, University of Maryland, College Park,  
Maryland  
*BA* – University of Virginia, Charlottesville, Virginia



**Michael J. Willing, MD, MBA**

**Assistant Professor of Emergency Medicine  
Associate Medical Director, Jewish Hospital  
Emergency Department**

*Residency* – Emergency Medicine, University of  
Cincinnati, Cincinnati, Ohio  
*MD* – St. Louis University, St. Louis, Missouri  
*MBA* – University of Cincinnati, Cincinnati, Ohio  
*BS* – St. Louis University, St. Louis, Missouri



**Brian A. Stettler, MD**

**Assistant Professor of Emergency Medicine and  
Residency Program Director, UC Department of  
Emergency Medicine  
Member, Greater Cincinnati-Northern KY Stroke Team**

*Emergency Neurovascular Fellowship*, University of Cincinnati,  
Cincinnati, Ohio  
*Residency* – Emergency Medicine, University of Cincinnati,  
Cincinnati, Ohio  
*MD* – Ohio State University College of Medicine, Columbus, Ohio  
*BS* – Ohio State University, Columbus, Ohio



**Stewart W. Wright, MD, MEd**

**Associate Professor of Emergency Medicine  
Director, Emergency Medicine Committee for  
Procedural Quality and Evidence-based Practice**

*Residency* – Emergency Medicine, University of  
Cincinnati, Cincinnati, Ohio  
*MD* – Washington University, St. Louis, Missouri  
*MEd* – University of Cincinnati, Cincinnati, Ohio  
*BS* – University of Illinois, Champaign, Illinois



**Alexander T. Trott, MD**

**Professor of Emergency Medicine**

*Residency* – Emergency Medicine, University of  
Cincinnati, Cincinnati, Ohio  
*MD* – University of Cincinnati, Cincinnati, Ohio  
*BA* – Denver University, Denver, Colorado



**Jonathan W. Van Zile, MD**

**Assistant Professor of Emergency Medicine  
Medical Director, Health Alliance Mobile Care  
Director, Resident Education, Jewish Hospital  
Emergency Department**

*Residency* – Emergency Medicine, St. Vincent’s Hospital,  
Toledo, Ohio  
*Residency* - Internal Medicine, University of Wisconsin,  
Madison, Wisconsin  
*MD* – Medical University of South Carolina, Charleston,  
South Carolina  
*BS* – University of South Carolina, Columbia, South Carolina



**Arthur A. Wall III, MD**

**Assistant Professor of Emergency Medicine  
Co-Director, New Technologies**

*Residency* – Combined Emergency Medicine/Internal  
Medicine, Wayne State University, Detroit, Michigan  
*MD* – University of Cincinnati, Cincinnati, Ohio  
*BS* – Ohio Wesleyan University, Delaware, Ohio